

Responsible Supply Chain Management

Strategic Approach

At JSW Energy, we recognise that our suppliers are an integral part of our value chain and play a critical role in delivering on our operational and sustainability commitments. As our business evolves to meet the growing expectations of responsible and transparent operations, so too does our approach to supply chain management. We are deepening our focus on cultivating a supplier ecosystem that reflects our values of integrity, accountability, and sustainability.

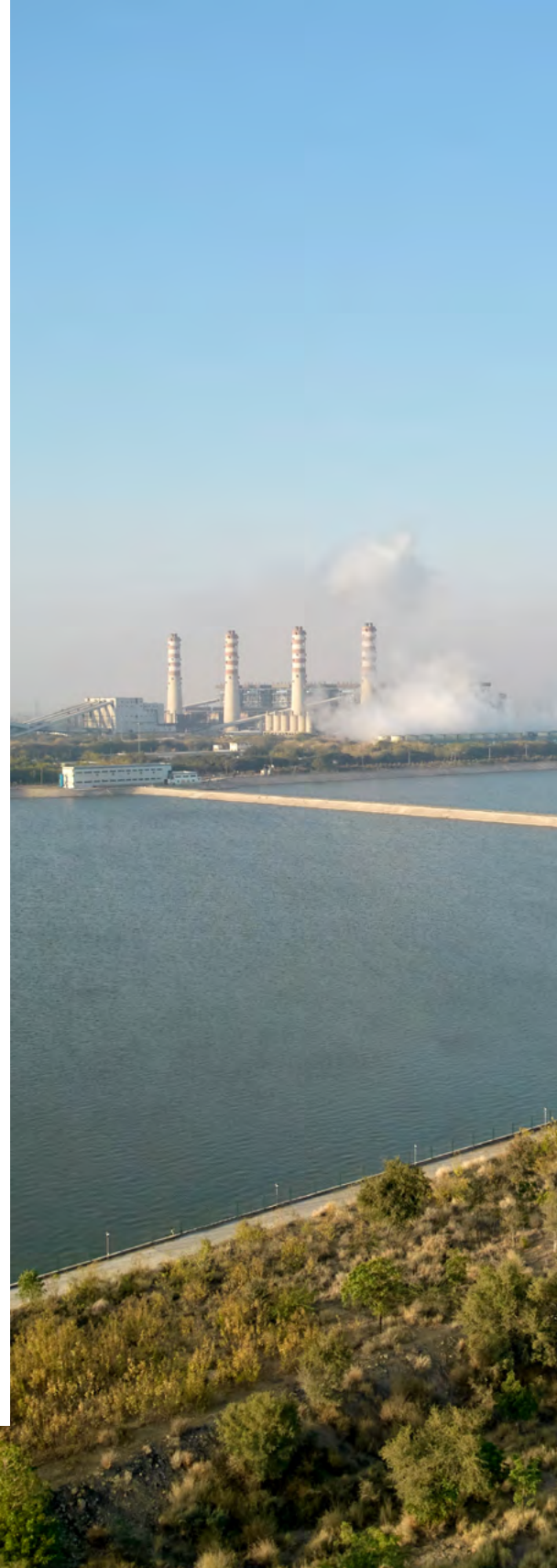
As part of our commitment to responsible sourcing, we have introduced a structured Supply Chain Assessment Programme focused on our Tier 1 critical suppliers, implemented in a phased manner, this initiative evaluates performance against key environmental, social, and governance (ESG) benchmarks. It enables us to pinpoint strengths, address gaps through targeted support, and promote ongoing improvement and shared growth across our supply network.

This effort is part of a broader ambition to build a resilient, socially responsible, and future-ready supply chain one that is aligned with our long-term vision for sustainable growth. Through open engagement, performance transparency, and capability building, we are working to ensure that our supplier relationships are grounded in trust and mutual accountability.

More than routine business transactions, we view our supplier relationships as strategic partnerships. By aligning our partners with the JSW Supplier Code of Conduct and embedding ESG principles into our procurement processes, we are actively involving our suppliers in our sustainability journey. Our goal is to foster a collaborative environment where each our value chain partner contributes to positive environmental and social impact, supporting both seamless operations and responsible value creation.

Goal of Supply Chain Sustainability Assessment :

- Evaluate Supplier compliance pertaining to sustainability & responsible business conduct.
- Access the ESG impact of our supply chain with focus on critical suppliers.
- Implement program to align supply chain at par with Global practices.



Supplier's CoC & Policies

Elements of Supplier Code of Conduct (CoC)

Compliance Management

Statutory compliance, notices, taxes, assurance mechanism for quality check

Environment & Climate Change

Emissions, Effluents, Energy and Biodiversity

Human Rights

Protection and Promotion of Human Rights and rights of indigenous people

Business Ethics

Ethical behaviour, Anticorruption, Conflict of interest, information security

Labour

Freedom of Association, Collective Bargaining, Forced Labour, Child Labour, OHS and Wages

Human Rights practices within the supply chain

At JSW Energy, we expect our suppliers to operate with the same integrity and accountability that define our own business practices. As part of our responsible sourcing approach, we require all suppliers to comply with relevant legal requirements and adhere to internationally recognised environmental and social standards. This includes full alignment with our Supplier Code of Conduct as well as the United Nations Global Compact (UNGC) Principles on Human Rights. By setting clear expectations, we aim to ensure that every link in our supply chain upholds ethical, sustainable, and socially responsible practices.

Supplier Engagement & Training

As part of our supplier engagement strategy, JSW Energy implemented an ESG questionnaire targeting key supply chain partners to evaluate the depth of ESG integration within their operations. This assessment provided a structured view of current practices, enabling the identification of both leading performers and those requiring targeted support. Based on these findings, we will roll out a series of ESG-focused workshops and awareness programmes in the forthcoming financial year.

JSW Energy recognises the critical role of supply chain sustainability in ensuring long-term business resilience. In line with SEBI's BRSR requirements and global ESG disclosures such as CDP, DJSI, MSCI, Sustainalytics, and FTSE Russell, we have adopted a structured approach to evaluate and enhance the ESG performance of our Tier 1 suppliers.

1

2

3

Supplier Sustainability Assessment

A third-party digital platform has been deployed to assess key suppliers on ESG parameters, helping to identify potential environmental, social, and governance risks and enabling both mitigation and continuous improvement. This initiative is aligned with our Supplier Code of Conduct, which outlines expectations in the areas of environmental responsibility, human rights, labour practices, business ethics, and compliance management

In FY 2024–25, invitations were extended to 51 critical suppliers representing 75% of our total procurement value. Of these, 42 suppliers registered on the platform, and 34 received ESG certifications based on performance against defined KPIs. Certified suppliers were also provided with customised action plans for further improvement. Periodic assessments will continue to ensure alignment with our sustainability goals and strengthen our responsible sourcing practices.

These initiatives enable us to build supplier capabilities, strengthen alignment with JSW Energy's sustainability objectives, and enhance overall ESG performance across our value chain.

Steps to monitor suppliers' ESG performance

- a. Evaluate supplier compliance pertaining to sustainability and responsible business conduct.
- b. Assess the ESG impact of our supply chain with focus on critical suppliers.
- c. Implement program to align supply chain at par with global best practices.

Delivering Procurement Excellence

	FY 2025	FY 2024
Directly sourced from MSMEs/ small producers	14.37%	51.33% 10.72% for MSME
Directly from within India	94.32%	98.21%

Way Forward

JSW Energy is committed to advancing a responsible and future-ready supply chain by deepening ESG integration and supplier engagement. By embedding ESG considerations into procurement decisions and fostering continuous improvement through structured action plans, we seek to create a resilient, transparent, and collaborative supplier ecosystem. These efforts reflect our broader vision of driving sustainable value creation and aligning our supply chain with global best practices and long-term business goals.



1
2
3